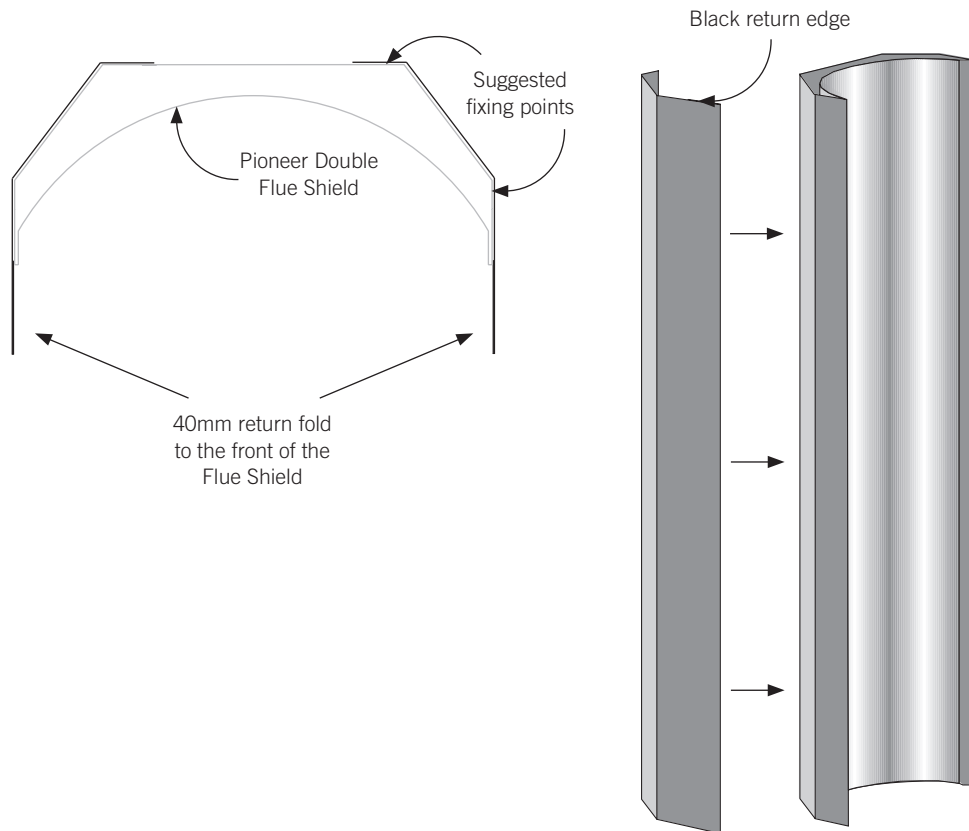


## Pioneer Double Flue Shield - Side extensions

Some Metro models have undergone additional testing which allows for reduced clearances when side extensions are fitted to the Pioneer Double Flue Shield. The side extensions are fitted as illustrated below.

The side extensions locate on both left and right hand sides of the flue shield. When fixing the side extensions to the flue shield, ensure you have the black face of the side extension facing outwards with the 40mm return edge facing toward the front of the wood fire as illustrated in the diagram. Each side extension can be fixed to the outer skin of the flue shield using either stainless steel rivets or a suitable fastening in the suggested fixing points as illustrated.

*Please note: Flue shield side extensions are only available for the Pioneer 1200 Double Flue Shield.*



## Pioneer Universal Double Flue Shield



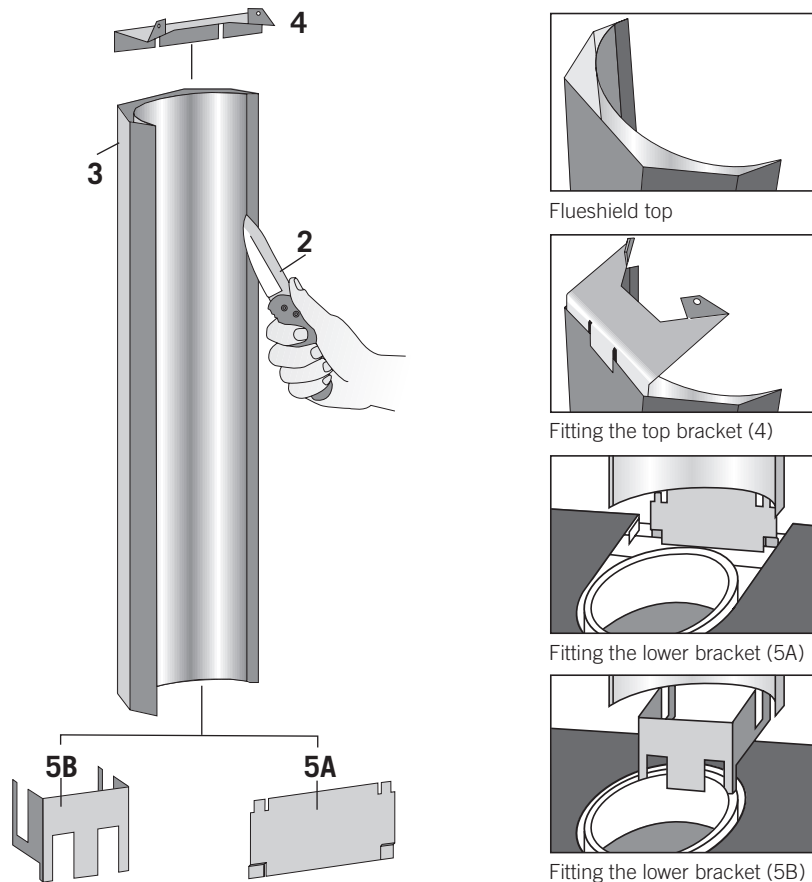
# PIONEER

## Flue Shield Fitting Instructions

## Pioneer Double Flue Shield

This double flue shield is a universal design with two alternative lower mounting brackets enabling it to be fitted to any brand wood fire. The highly reflective stainless steel inner shield and vented cavity between rear and inner shields ensures maximum shielding of walls directly behind the installed appliance. Due to its compact design, if minimum side clearances specified with your wood fire are necessary this may require the side depth of the flue shield to be extended with optional side extension panels. Refer to the specifications supplied with your wood fire or consult your wood fire stockist.

## Parts and assembly



## Flue Shield fitting instructions

*Please note: The 900mm flue shield is suitable for the Metro Rad Plus and Metro LTD Rad plus only.*

1. Unpack the flue shield and familiarise yourself with the illustrations.
2. Using a sharp knife or razor blade, carefully cut through the plastic film on the 'inside face' where it meets the outer shield (refer diagrams). Cut along the full length of the flue shield on both sides, then peel off and fully remove the plastic protective film from the stainless steel inner shield.
3. Peel back and fully remove the plastic protective film from the outer shield.
4. Fit the top bracket to the flue shield as illustrated ensuring the rear mid section of the bracket fits 'outside' while the two outer sections of the bracket fit 'inside'.
5. Fit the appropriate lower bracket to your wood fire.

*Please note: Flue shield bracket 5A is packaged inside the firebox for the following pedestal models: Tiny Ped, Wee Ped, Xtreme Ped, Ambie One and Ambie Plus.*

### Lower bracket '5A' suitable for wood fires with an inner rear heat shield.

Attach bracket '5A' to the inner rear heatshield directly behind the flue outlet as illustrated in the diagram. The rear/outer face of the flue shield then locates into the two notches in bracket '5A'.

### Lower Bracket '5B' suitable for all other wood fires without an inner rear heat shield.

On certain model wood fires without a raised flue spigot it will be necessary to cut off both the lower outer legs from the bracket '5B' leaving the central tongue to locate inside the flue outlet only.

Two tabs are provided and if folded back at 90 degrees the bracket and flue shield will mount lower onto the appliance.

The flue shield then locates into the two notches in bracket '5B' as illustrated in the diagram.

6. Once the flue shield is fitted in position onto either of the two lower mounting brackets, check to ensure a large gap is not present between the top of the wood fire and the base of the flue shield, as this may result in a hot spot on the rear wall directly behind the flue outlet. If your wood fire has a lift off top grill the flue shield should be raised sufficiently to enable the top grill to be removed.
7. Using the pre-punched holes in the two tabs provided on the top bracket as guides, drill into the flue pipe and secure the top bracket to the flue pipe with two Stainless Steel rivets (not supplied).