

Metro Side Wetback Installation Instructions

⚠ WARNING! Important Information

- Do not connect to an unvented hot water system.
- Install in accordance with AS 3500.4.1 or NZS 4603 and the appropriate requirements of the relevant building code or codes.

⚠ CAUTION! Important Information

- Wetbacks must be connected with water before operating the fire and available to the wetback while the fire is in operation
- Wetback systems are not suitable for use in locations where the water supply has lime content. Lime build up inside the coil will eventually block the coil causing the wetback to fail
- Rainwater collection tanks installed lower than the wetback that use a water pump to supply the home, can cause problems if the pump is not operational. In these situations either the type of wetback or a roof header tank should be considered
- It is recommended the return pipe has a minimum rise of 1 in 12; performance will reduce as the distance to the storage cylinder increases.



Suitable for installation into the following models:

- Tiny Rad Woody
- Wee Ped
- Wee Rad Leg
- Classic Rad
- Wee Rad Base
- Rad Plus
- Wee Rad Woody
- LTD Rad Plus

Please note: This wetback fits to the left hand side of the firebox externally. Left hand is deemed as you are looking at the appliance from the front.

- Your Metro fire requires the rear heat shields to be removed and the circular knock outs removed for copper pipe penetration
- It is recommended to fit the wetback prior to the wood fire installation.

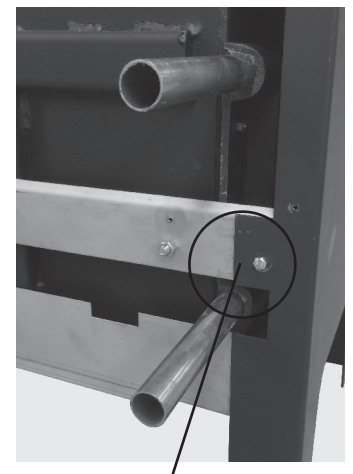
See overleaf for wetback installation instructions for the Metro Classic Rad and Rad Plus models

Installation Instructions - Tiny and Wee Series models

1. For best access during this process remove the wood fire door and internal baffle, place both in a safe area so as not to damage parts or painted surface. Removal of the baffle allows for easy access through the flue spigot for wetback installation.
2. At all times, place the removed fastenings in a safe location as these will be needed to refit the necessary parts.
3. Remove both the rear heat shield and the rear inner heat shield. Both are fixed into position with 8g pozi screws and the inner heat shield is bolted at the top only with one M6 fastening.
4. As you look from the rear of the appliance undo the very right hand M6 bolt in the spreader bar (illustrated opposite).
5. Spread the side panel away from the rear fixing point to provide access (illustrated opposite).
6. Remove all countersunk M6 fastenings in the left hand side wall of the firebox. These are used for fixing the wetback to the outside wall of the appliance.
7. Apply a liberal amount of Pioneer fire cement (supplied) around the full perimeter of the flat face and over the internal flat area. This is required for optimum heat transfer.
8. Insert the wetback into the gap provided by spreading out the side panel. Note the lower pipe is positioned below the spreader bar. Fix in place with the provided countersunk fastening and nut at the rear top slot of the wetback first. Tighten but allow for a small amount of movement.
9. Line up the front M6 tapped hole in the casting with the front 8mm dia hole in the firebox wall. Using a second countersunk fastening screw into the casting from inside the firebox, discard the M6 nut. Tighten both fastenings to ensure a tight fit to the firebox. Insert and fasten the remaining rear fastening.



Right hand M6 bolt undone and side panel 'spread' for access



Wetback installed and side panel re-fastened. Heat shields to go back on for completion

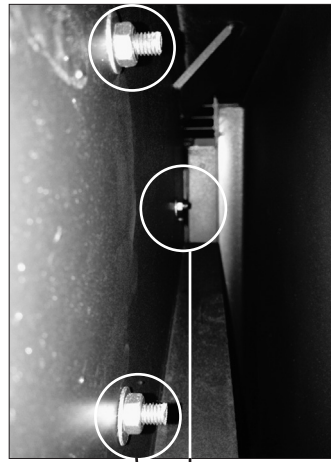
10. Reassemble the rear heat shields, fitting the inner heat shield first.

Note: Both heat shields require the circular knock out plates removed prior to reassembly. It is absolutely critical that these heat shields are placed back onto the appliance correctly with all bolts and screws in place and done up tightly.

11. The wetback is now fitted and ready for connection into your hot water cylinder using standard plumbing practice.

Installation Instructions - Classic Rad

1. For best access during this process remove the wood fire door and internal baffle, place both in a safe area so as not to damage parts or painted surface. Removal of the baffle allows for easy access through the flue spigot for wetback installation.
2. At all times, place the removed fastenings in a safe location as these will be needed to refit the necessary parts.
3. Remove both the rear heat shield and the rear inner heat shield. Both are fixed into position with 8g pozi screws and the inner heat shield is bolted at the top only with one M6 fastening.
4. Remove the three countersunk M6 fastenings in the left hand side wall of the firebox. These are used for fixing the wetback to the outside wall of the appliance.
5. Apply a liberal amount of Pioneer fire cement (supplied) around the full perimeter of the flat face and over the internal flat area. This is required for optimum heat transfer.
6. Insert the wetback into the gap provided. Fix in place with the provided countersunk fastening and nut at the rear top slot of the wetback first. Tighten but allow for a small amount of movement.
7. Line up the front M6 tapped hole in the casting with the front 8mm dia hole in the firebox wall. Using a second countersunk fastening screw into the casting from inside the firebox, discard the M6 nut. Tighten both fastenings to ensure a tight fit to the firebox. Insert and fasten the remaining rear fastening.



Classic rad fastening positions for the side wetback



Side wetback placement with inner heat shield re-fitted

8. Reassemble the rear heat shields, fitting the inner heat shield first.
Note: The outer heat shield requires the circular knock out plates removed prior to reassembly. It is absolutely critical that these heat shields are placed back onto the appliance correctly with all bolts and screws in place and done up tightly.
9. The wetback is now fitted and ready for connection into your hot water cylinder using standard plumbing practice.

Installation Instructions - Rad Plus and LTD Rad Plus

1. For best access during this process remove the wood fire door and place in a safe area so as not to damage parts or painted surface.
2. Remove the 6 x small pozi drive screws holding the outer rear panel. Remove the two pre-punched knock outs from this panel.
3. Next to the door hinge at the front of the fire, loosen the 2x pozi drive screws holding the side panel to the firebox, DO NOT REMOVE.
4. At the rear of the fire remove the 1x large pozi-drive screw holding the side panel to the firebox lower angled mount plate.
5. Remove all countersunk M6 fastenings in the left hand side wall of the firebox. These are used for fixing the wetback to the outside wall of the appliance.
6. Apply a liberal amount of Pioneer fire cement (supplied) around the full perimeter of the flat face and over the internal flat area. This is required for optimum heat transfer.

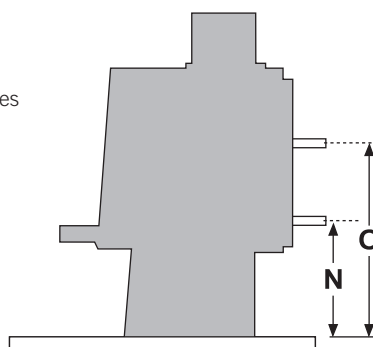
7. Insert the wetback into the gap provided by spreading out the side panel. Fix in place with the provided countersunk fastening and nut at the rear top slot of the wetback first, tighten but allow for a small amount of movement.
8. Using the remaining countersunk M6 bolts supplied fit the wetback to the firebox side. The front hole of the wet back is threaded. Tighten all fastenings to ensure a tight fit to the firebox.
9. Reassemble and tighten all panels and fixings.
11. The wetback is now fitted and ready for connection into your hot water cylinder using standard plumbing practice.

Metro wetback connection heights

Wetback connections

Wetback connection heights (N) and (O) are detailed in the table opposite. Wetback centres are measured to the left of the flue centre when facing the Metro fire/wall as follows:

- Tiny Rad Woody 184mm
- Wee Series models 226mm
- Rad Plus 206mm
- LTD Rad Plus 206mm



Connection heights (mm)

Model	N	O
Tiny Rad Woody	365	555
Wee Rad Leg and Wee Rad Base	295	485
Wee Rad Woody	365	555
Wee Ped	295	485
Classic Rad	393	583
Rad Plus and LTD Rad Plus	530	720