

3kW and 4kW WETBACK INSTALLATION INSTRUCTIONS

⚠ WARNING! Important Information

- **DO NOT** connect to an unvented hot water system
- Install in accordance with AS 3500.4.1 or NZS 4603 and the appropriate requirements of the relevant building code(s).

⚠ CAUTION! Important Information

- Wetbacks must be connected with water before operating the fire and water must always be available to the wetback while the fire is in operation
- Wetback systems are not suitable for use in locations where the water supply has lime content. Lime build up inside the coil will eventually block the coil causing the wetback to fail
- Rainwater collection tanks installed lower than the wetback that use a pump to supply the home, can cause problems if the pump is not operational. In these situations either the type of wetback or a roof header tank should be considered



3kW or 4kW Wetback

The 3kW wetback is usually adequate for most homes; however, if your hot water use is considerable the 4kW would be a preferable option in the LTD Metro models only. Other considerations are:

- Distance from the Metro to the storage cylinder will affect the amount of hot water produced. If it is more than 2 metres away the 4kW is usually preferable.
- Your climate and the manner in which you will 'fire your Metro are the most relevant factors in choosing the correct output wetback. If you are in a moderate climate or have a modern well-insulated home you are likely to be running your Metro on lower output settings, in which case the 4kW should be used. However, if you live in a cold climate, or have an older, cold or large home you are more likely to be 'firing' your Metro on a higher burn rate, in which case the 3kW would be better suited.

Both 3kW and 4kW wetback options are fitted to the inside rear of the firebox, with the connection pipe heights illustrated and detailed on the opposite side of this sheet. Please note:-

- Wetback connections for the Metro models listed are 140mm left of the flue centre, facing the Metro/wall; the return pipe connection is directly above the inlet connection.

Note: It is recommended the return pipe has a minimum rise of 1 in 12. Performance will reduce as the distance to the cylinder increases.

Fitting the wetback to a freestanding model:

1. Remove the rear panel of the Metro by removing the four pozi drive screws. Remove the two pre-punched knockouts from this panel.
2. Two further knockouts will be visible on the inner rear heatshield, remove these also. Once these are removed 6mm nuts will be visible through the knockout holes.
3. Open the Metro's door and locate two bolts securing the pressed washers which are visible on the left hand side of the firebox for both inlet and outlet connection points.

Suitable for installation into the following models:

Clean air models (3kW wetback only)

Xtreme Ped	Xtreme Rad - Leg
Ambie Plus	Xtreme Rad - Base
Mega Rad	Xtreme Rad - Woody

LTD rural models (3kW or 4kW wetback)

LTD Wee Rad - Leg	LTD Xtreme Rad - Leg
LTD Wee Rad - Base	LTD Xtreme Rad - Base
LTD Wee Rad - Woody	LTD Xtreme Rad - Woody
LTD Mega Rad	

Water heating is another key feature of your Metro wood fire. Almost all Metro models can be fitted with a wetback, which are designed to give maximum output with minimal effect on the operation of the fire.

LTD models listed above can be fitted with either the 3kW or 4kW wetback. The clean air approved models listed are only suitable for installation of the 3kW wetback.

Only the Pioneer cast jacket wetback system should be fitted to your Metro fire. Any alternative wetback system will void the Metro's emission approvals and may seriously affect the performance of the appliance and void its warranty.

Note: Wetback systems are not suitable for use in locations where the water supply has lime content, lime build up inside the coil will eventually block the coil causing the wetback to fail.

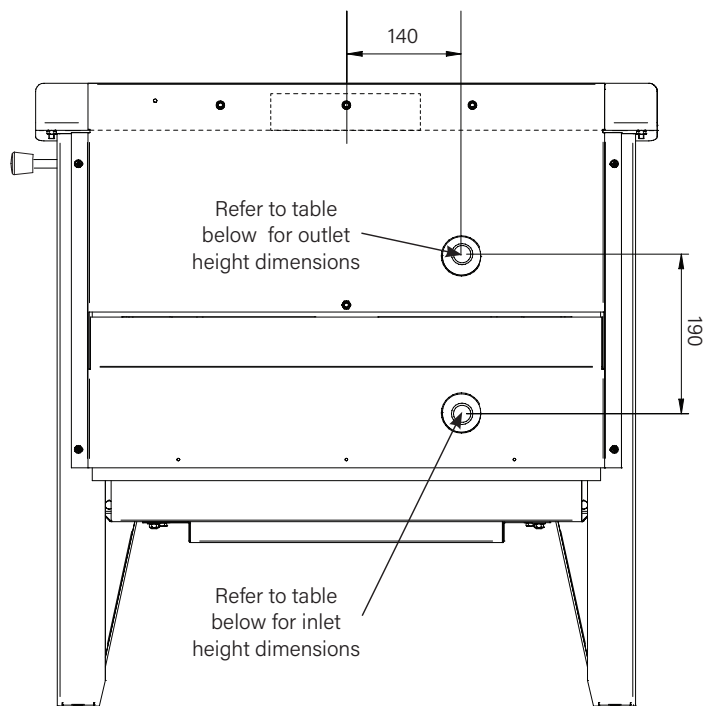
3kW and 4kW WETBACK INSTALLATION INSTRUCTIONS

Installation instruction continued...

- A further three bolt heads will also be visible on the inside rear wall of the firebox. These are threaded into the 6mm thick firebox. Remove all three bolts.
- Using the tube of sealant supplied with the wetback, apply a liberal bead of sealant around both connection holes on the inside of the firebox. On the rear of the wetback casting apply the remaining contents of the tube equally around both connection pipes and also the outer circumference of the wetback which will face and press against the inside rear wall of the firebox. This will completely seal the wetback to the inside rear wall of the fire for correct installation.

Note: Ensure there is no gap between pipe and rear wall access holes. This cement must fully cure before appliance use.

- Fit the wetback into the firebox and carefully pass the connection pipes through the holes in the rear wall of the firebox. Securely attach the wetback using the three bolts previously removed from the rear face of the firebox, fitting them through the slots provided in the wetback's jacket.
- The wetback is now ready for connection to the storage cylinder by a registered plumber.



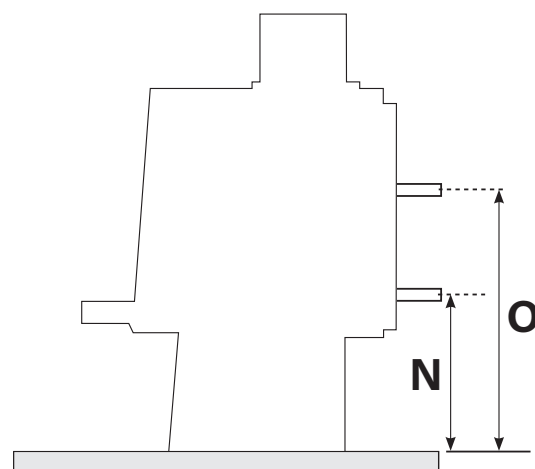
Wetback installation into a freestanding model

WETBACK CONNECTION HEIGHTS

(Measurements shown are in mm)

Clean air models	N	O
Xtreme Ped	312	502
Xtreme Rad - Leg	312	502
Xtreme Rad - Base	312	502
Xtreme Rad - Woody	382	572
Ambie Plus	360	550
Mega Rad	300	490

LTD rural models	N	O
LTD Wee Rad - Leg	295	485
LTD Wee Rad - Base	300	490
LTD Wee Rad - Woody	365	555
LTD Xtreme Rad - Leg	350	540
LTD Xtreme Rad - Base	350	540
LTD Xtreme Rad - Woody	420	610
LTD Mega Rad	300	490



Note: Freestanding wetback connections are 140mm left of the flue centre, facing the Metro/wall.