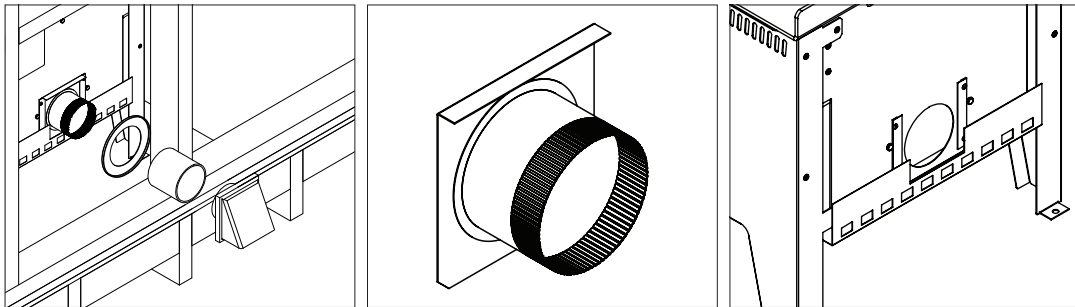


Direct Vent Kits Installation Manual



metrofires

Direct Vent Installation

Direct Vent wall kit installationPage 1
Direct Vent floor kit installationPage 2
Direct Vent ceiling kit installationPage 3

⚠ WARNING! Important Information

ALL VENTING MUST HAVE UNRESTRICTED AIR FLOW WITHOUT POSSIBILITY OF BLOCKAGE FROM INSULATION OR BUILDING MEMBRANE.

- The appliance and flue-system shall be installed in accordance with AS/NZS 2918 and the appropriate requirements of the relevant building code or codes
- The appliance must be installed correctly. We recommend a competent and suitably qualified NZHHA installer

We have four types of Direct vent kits as detailed. Additional ducting and components are also available on request.

The expanding semi-rigid duct supplied can expand up to 3x its cut length. The direct vent positioned in the wall should be as close as possible to the connection on the fire.

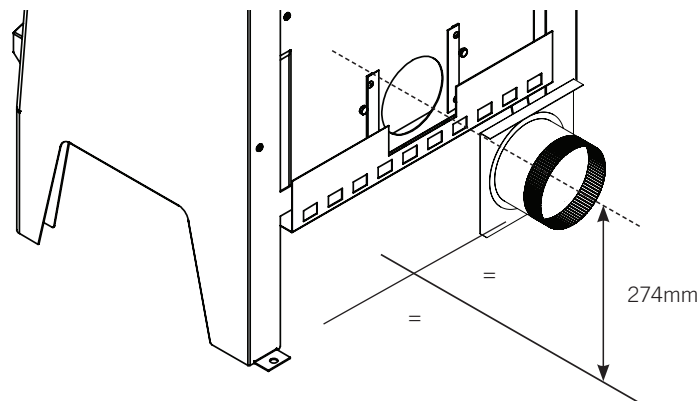
All venting must have unrestricted air flow without the possibility of blockage from insulation or building membrane.

Note: The direct vent centreline is 274mm from floor level (top face of the floor protector/hearth) and centred horizontally with the fire.

⚠ CAUTION! Important Information

PLEASE ENSURE YOU HAVE READ THESE INSTRUCTIONS AND THAT YOU ARE FULLY CONVERSANT WITH THE INSTALLATION OF THE DV KIT YOU HAVE CHOSEN

- The semi-rigid ducting supplied with each kit can expand up to 3x its cut length
- The direct vent is on the centreline of the fire and 274mm vertical centreline as illustrated below.
- All images are shown without the rear heat shield refitted. It is critical this rear heat shield is refitted before operation of the fire.



DV Wall Kit - Suitable for installations exiting through an exterior wall

DV Floor Kit - Option 1 (SKU 400-1301)

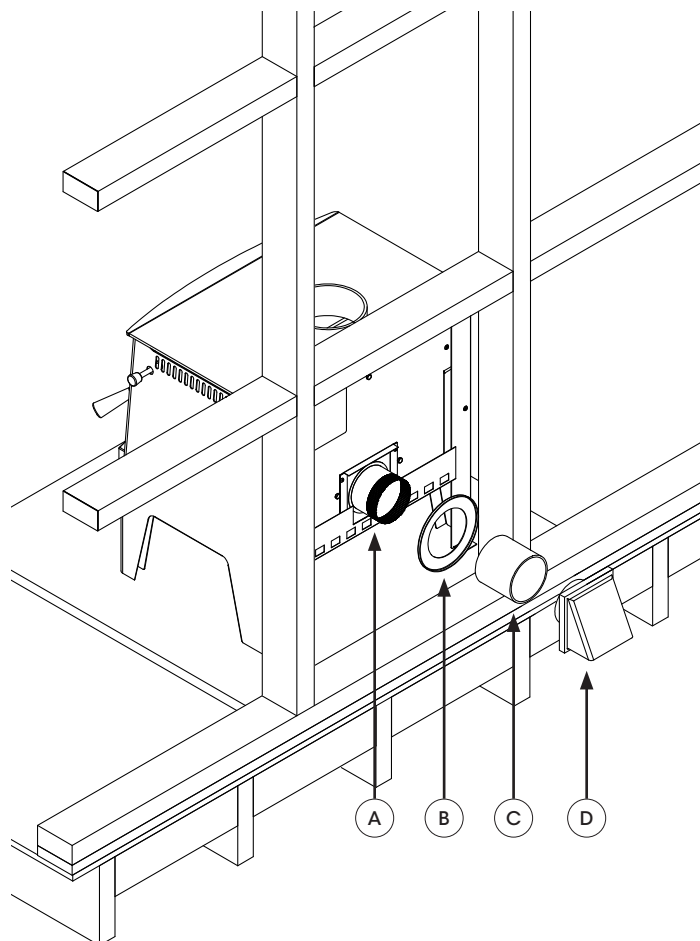
The DV Wall kit contains a semi-rigid expanding sleeve used for both 'wall' and 'corner' installations. The wall penetration needs to be as close as possible to the direct vent connection of the fire.

1. Drill or cut a 110mm diameter hole through the wall and cladding.
2. Fit the sleeve to the external vent prior to installing with vermin mesh and seal this vent to prevent water ingress while meeting the appropriate requirements of the relevant building code or codes.
3. Remove the rear heat shield from the fire and cut out the DV access panel. Slide the direct vent spigot adaptor into the spigot guides and refit the rear heat shield.
4. After installation of the fire, place the cover flange over the vent duct and expand the duct to engage over the direct vent spigot on the fire.

Note: The vent duct can expand out to 450 mm as required for 45 degree corner installations. The expanding duct does not necessarily have to engage with the external vent intake, but simply provide an unrestricted air path to the fire bypassing all insulation and building membranes. Fixings are not supplied in this DV Wall Kit.

Component List

- (A) DV adaptor spigot
- (B) Cover flange
- (C) Expanding ducting
- (D) External vent



⚠ WARNING! Important Information

A FREE UNRESTRICTED AIR SUPPLY IS REQUIRED IN THE FLOOR CAVITY TO THE DIRECT VENT. WHERE FLOOR CAVITIES ARE NOT OPEN VENTED THE DUCT WILL NEED TO BE EXTENDED TO AN UNRESTRICTED AIR SUPPLY.

⚠ CAUTION! Important Information

- Please ensure you have read these instructions, and that you are fully conversant with the installation of the DV Floor Kits
- Fixings are not supplied in these DV Floor packs.

DV Floor Kit Option 1 Component List

- (A) DV adaptor spigot
- (B) Cover flange
- (C) 70mm tube sleeve OR expanding ducting
- (D) Elbow adaptor
- (E) Rectangular duct
- (F) Connector
- (G) Anti-vermin grill

DV Floor Kit Option 2 Component List

- (A) DV adaptor spigot
- (B) Cover flange
- (C) Expanding ducting
- (H) Inlet vent

DV Floor Kit - Option 1 (SKU 400-1352)

DV Floor Kit 1 contains two different ducting sleeves. A short 70mm sleeve for when the fire is positioned parallel to the rear wall, and a longer expanding duct for use in a 45 degree corner installation. In the case of a corner installation, the wall penetration needs to be as close as possible to the direct vent connection of the fire.

1. Cut out a recess in the bottom plate and any nogs measuring 210mm wide x 65mm deep adjacent to the gib and on the centre line of the wood fire. If a wall stud obstructs this, remove it and reposition new studs to each side of the required recess while meeting the appropriate requirements of the relevant building code or codes.
2. Install the PVC elbow adaptor (D) and ducting (E) through the floor and beyond all insulation and enclosure membranes to create an unrestricted air path to the fire. Fit the anti-vermin grill (F&G).
3. Position a 110mm diameter hole through the wall and cladding to allow the PVC elbow adaptor to protrude through.
4. Remove the rear heat shield from the fire and cut out the DV access panel.
5. For a parallel wall installation, place the small 70mm tube sleeve and wall cover flange over the Spigot Adaptor. Slide the sleeve back onto the wall elbow connection and position the cover flange. Refit the rear heat shield to the fire.

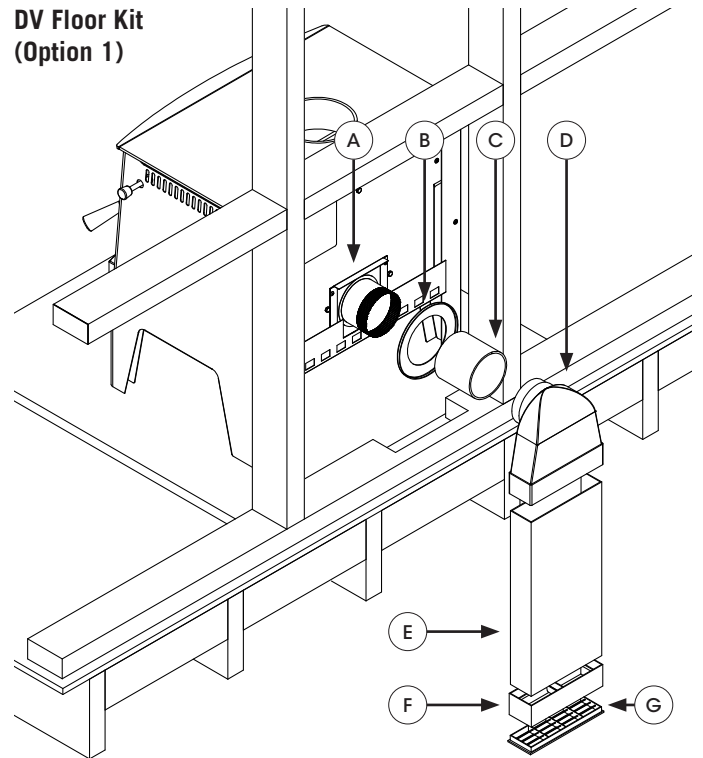
DV Floor Kit - Option 2 (SKU 400-1351)

DV Floor Kit 2 contains a longer length of expanding ducting which can expand up to 3x its cut length. This ducting can be curved to pass through both the floor protector and floor to an unrestricted air supply.

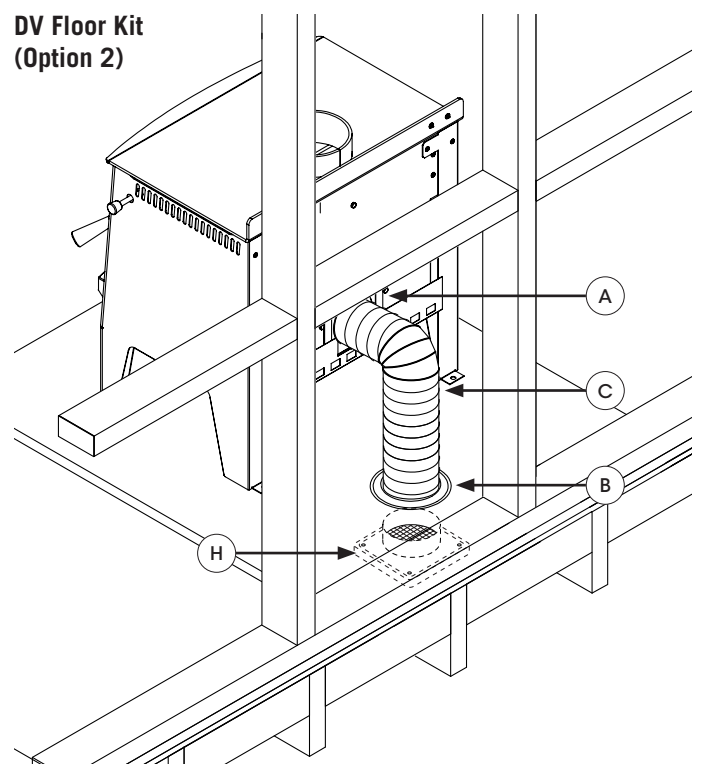
- In the case of a parallel rear wall position, the fire will need to be repositioned at least a further 50mm forward (minimum 150mm rear wall clearance) to enable this. See note below.
- In the case of a corner wall 45 degree position, there will be sufficient space to enable the expanding duct to be positioned.

Note: Ensure the floor protector still achieves the required installation clearances if using this DV Floor kit and installing the appliance further forward from the rear wall(s).

DV Floor Kit (Option 1)



DV Floor Kit (Option 2)



⚠ WARNING! Important Information

A FREE UNRESTRICTED AIR SUPPLY IS REQUIRED IN THE CEILING CAVITY TO THE DIRECT VENT. WHERE ROOF CAVITIES ARE NOT OPEN VENTED THE DUCT WILL NEED TO BE EXTENDED TO AN UNRESTRICTED AIR SUPPLY.

⚠ CAUTION! Important Information

- Please ensure you have read these instructions, and that you are fully conversant with the installation of the DV Ceiling Kit
- Fixings (screws or rivets) are not supplied in this DV Ceiling Pack.

DV Ceiling Kit (SKU 400-1401)

The DV Ceiling kit contains two different ducting sleeves. A short 70mm sleeve for when the fire is positioned parallel to the rear wall, and a longer expanding sleeve for use in a 45 degree corner installation. In the case of a corner installation, the wall penetration needs to be as close as possible to the direct vent connection of the fire.

1. Cut out a recess in the nogs and top plate, 210mm x 65mm deep adjacent to the gib and on the centre line of the fire. If a wall stud obstructs this, remove it and reposition new studs to each side of the required recess while meeting the appropriate requirements of the relevant building code or codes.
2. Install the PVC elbow adaptor (D) and ducting (E) into and up the wall beyond all insulation and enclosure membranes to create an unrestricted air path to the fire. Fit the anti-vermin grill (F&G).
3. Position a 110mm diameter hole through the wall and cladding to allow the PVC elbow adaptor to pass.
4. Remove the rear heat shield from the fire and cut out the DV access panel.
5. For a parallel wall installation, place the small 70mm tube sleeve and wall cover flange over the Spigot Adaptor. Slide the sleeve back onto the wall elbow connection and position the cover flange. Refit the rear heat shield to the fire.

Component list

- (A) DV adaptor spigot
- (B) Cover flange
- (C) 70mm tube sleeve OR expanding ducting
- (D) Elbow adaptor
- (E) Rectangular duct
- (F) Connector
- (G) Anti-vermin grill

